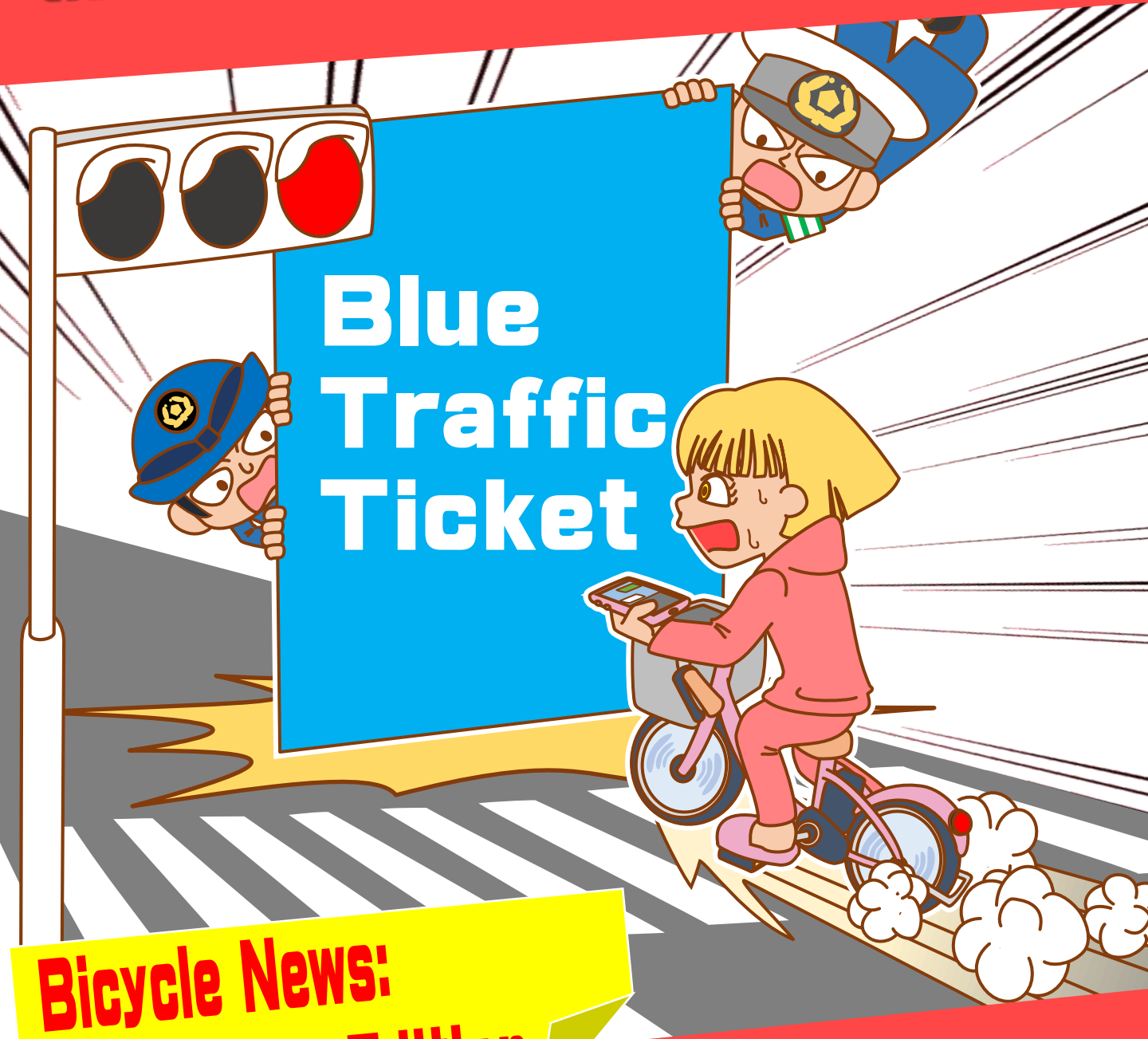


**From 1 April 2026, Cyclists aged 16 or older will be issued with tickets for traffic offences**



**Bicycle News:  
Startup Edition**

*Metropolitan Police  
Department  
Traffic Division*

✘ Certain traffic offences committed by cyclists (excluding cyclists under the age of 16) are subject to the Traffic Offence Notification System.

# What is the Traffic Offence Notification System?

Under the Traffic Offence Notification System, if a driver or rider pays the fine within the designated period after committing certain traffic offences, the case will be closed without being referred to a criminal or family court.

## Traffic offences Committed by Cyclists

- Continued the Offences Despite a Warning
- Caused a Danger to Vehicles and Pedestrians
- Dangerous Driving Leading Directly to Accidents

Not Malicious or Dangerous Offences

Malicious or Dangerous offences such as Drink Driving

Notifications (Issuances of Blue Tickets)

Ex: Stop Sign Offence



Ex: Red Light Offence



Issuances of Red Tickets

Warning

Fines (Payable at Banks and Post Offices)



Non-payment

Payment

Case Closed

Criminal Procedures

- Criminal Trial
- Trial at Family Court

©くまみね



**From 1 April 2026, Cyclists aged 16 or older will be issued with tickets for traffic offences**



**Bicycle News:  
Offences Subject to the Traffic  
Offence Notification System**

**MPD  
Traffic Division**

MPD Website  
(Traffic Safety for Cyclists)



※Certain traffic offences committed by cyclists (excluding cyclists under the age of 16) are subject to the Traffic Offence Notification System.

# Offences Subject to Blue Tickets

When identifying a traffic offence committed by a cyclist, police officers generally give a warning at the scene. However, if the offence is malicious and dangerous enough to pose a significant danger and nuisance to other pedestrians or vehicles and to create a risk of traffic accidents, police officers issue a blue traffic ticket.

**Disobeying  
Traffic  
Signals**  
6,000 yen

5,000 yen for running  
flashing signals

**Stop Sign  
Violation**

5,000 yen

**Driving on  
the wrong  
side of the  
road**

6,000 yen

**Use of Mobile  
Phone, etc.  
(Holding)**

12,000 yen

**Trespassing  
at a closed  
level crossing**

7,000 yen

**Defective  
Braking  
System**

5,000 yen

※These offences are examples.

For more information,  
visit our website!

MPD Website

【Traffic Offence  
Notification System】



@くまみね

In cases of committing serious offences\* or causing accidents, offenders are subject to criminal procedures (issuance of red tickets)

※Drink Driving, Driving Under Influence of Alcohol, Obstructive Driving, Use of Mobile Phones (Causing a Danger to Traffic)

**In addition!**

If a person caused a traffic accident or is caught two or more times within three years for any of the 16 types of traffic offences including running a red light, etc., the Prefectural Public Safety Commission orders the person to attend a “Lecture for Cyclists”.

街とともに。人とともに。  
FOR MORE COMMUNICATION

警視庁

警視庁交通部  
特設サイト

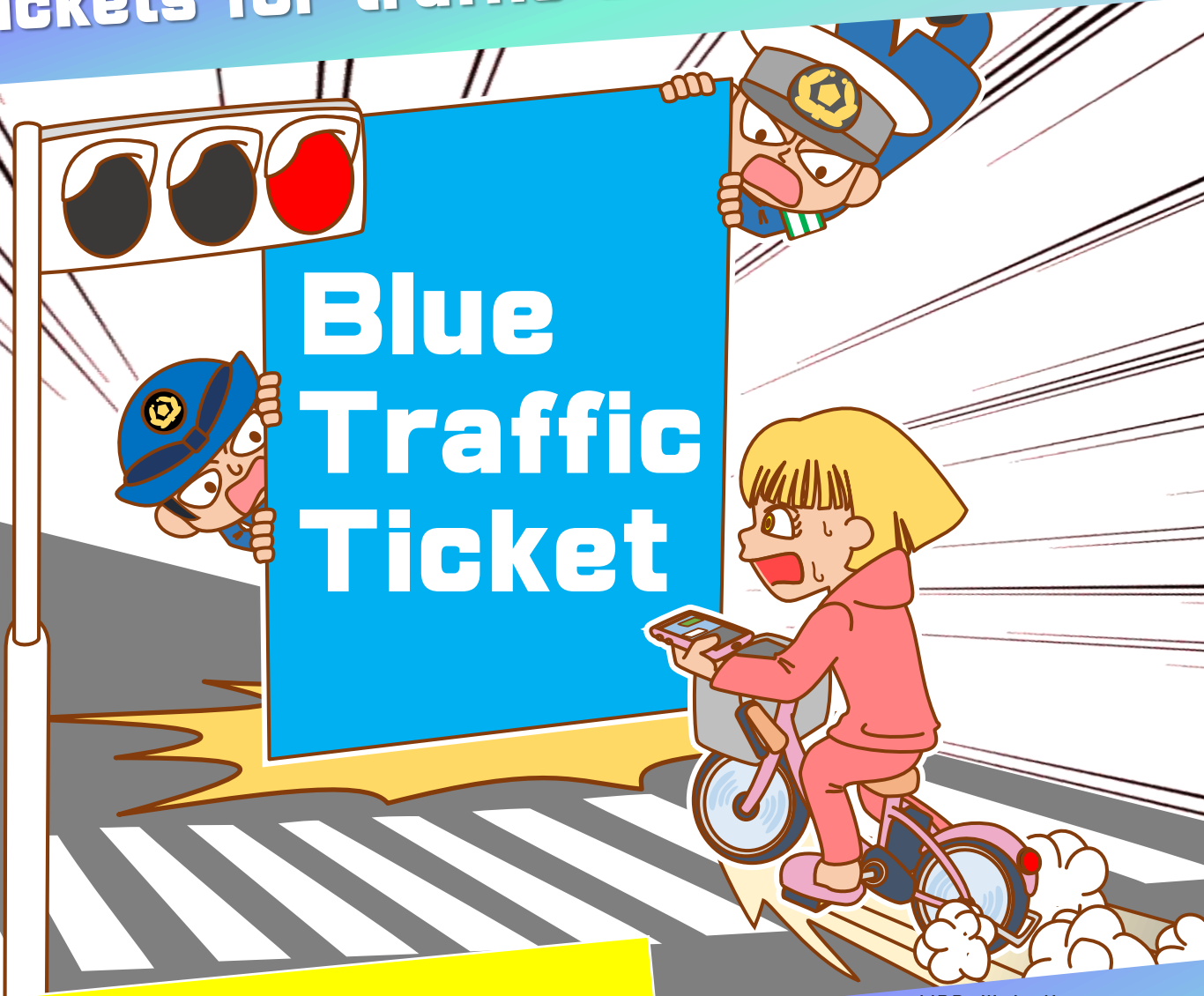
交通事故を防ぐ、簡単だけど、効果のある方法が満載!

**TOKYO SAFETY ACTION**

<https://www.safetyaction.tokyo/>



**From 1 April 2026, Cyclists aged 16 or older will be issued with tickets for traffic offences**



***Bicycle News:  
FAQs Regarding the Traffic  
Offence Notification  
System***

MPD Website  
(Traffic Safety for Cyclists)



***MPD  
Traffic Division***

※Certain traffic offences committed by cyclists (excluding cyclists under the age of 16) are subject to the Traffic Offence Notification System.



# FAQs Regarding the Traffic Offence Notification System

## Q1 What will change from 1 April?

**A** The procedures following a traffic offence committed by a cyclist will change, and the Traffic offence Notification System (so called the “Blue Ticket System”) will be introduced. **No change will be made to the traffic rules for bicycles.**

## Q2 What is the Traffic Offence Notification System?

**A** If a driver or rider commits a traffic offence and pays the fine within the designated period, **the case will be closed without criminal procedures such as a referral to a criminal or family court.** This system is also known as the Blue Ticket System, and the offender will have no criminal record.

## Q3 From what age does the system apply?

**A** A person aged **16 or older** is subject to it.

## Q4 What is a blue ticket?

**A** It is **a blue slip of paper given to an offender** that contains a summary of the offence and other relevant information. It is officially called a “Traffic Offence Notification”.

## Q5 What does “Offence (Hansoku Koi)” mean under this system?

**A** It means illegal conduct, such as disobeying a traffic signal, that **a police officer can actually witness and determine that an offence was clearly committed.**

## Q6 What should I do after receiving a blue ticket?

**A** After receiving a blue ticket and payment slip issued by a police officer, **the case will be closed once the payment slip is taken to a bank or a post office and the fine is paid.**

## Q7 What will happen if I don't pay the fine?

**A** Payment of the fine is **voluntary**. If you do not pay the fine, criminal procedures, such as a criminal trial, will be initiated.

## Q8 Why will the Traffic Offence Notification System be introduced?

**A** The number of bicycle accidents shows no sign of declining, and traffic rules and bad manners among cyclists has become significant social issues. In order to promote the safe use of bicycles and reduce traffic accidents, the police are reinforcing guidance and enforcement against traffic offences committed by cyclists. Swift handling of such matters allows the effective pursuit of responsibility, and this system will be introduced **to reduce the number of traffic accidents involving bicycles.**

## Q9 Will I have penalty points on my driving license?

**A** **No penalty point will be added** to your driving licence. However, if you commit a serious and dangerous offence, such as drink driving, your driving license could be suspended.

## Q10 What will happen if I repeatedly commit traffic offences?

**A** Other than blue tickets for traffic offences, it is required to **attend to a lecture for cyclists** (a person aged 14 or older is subject to it). Your attendance is required if you commit certain traffic offences stipulated by law two or more times within three years. If you receive an order from the Prefectural Public Safety Commission, please make sure to attend a lecture.



**詳しくはこちら**  
警視庁ホームページ  
【交通反則通告制度】



©くまみね

街とともに。人とともに。  
FOR MORE COMMUNICATION

警視庁

警視庁交通部  
特設サイト

交通事故を防ぐ、簡単だけど、効果のある方法が満載!

TOKYO SAFETY ACTION

<https://www.safetyaction.tokyo/>

